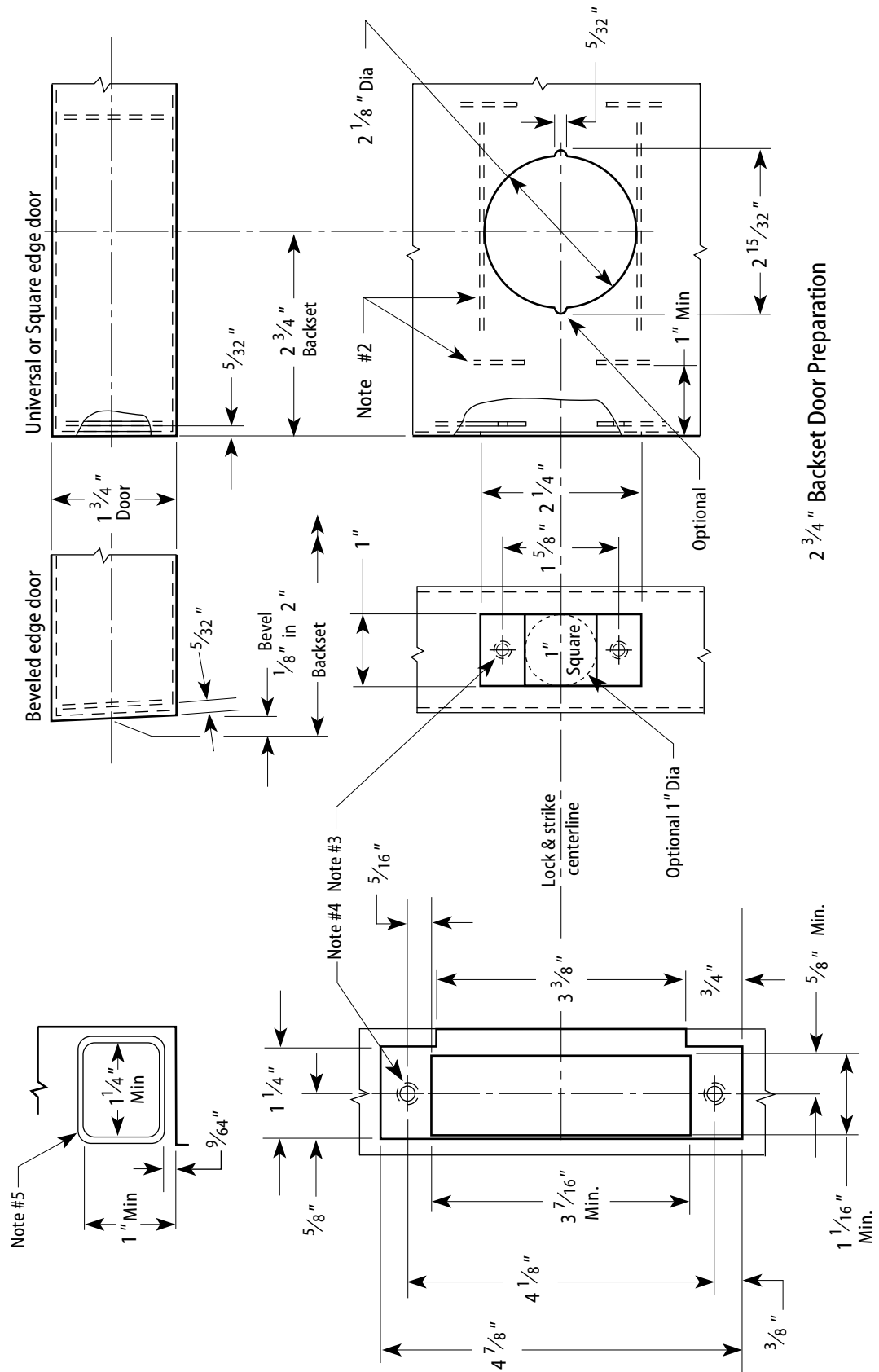


**Notes**

- 1 Allow plus tolerance for clearance per ANSI A115.2.
- 2 Lock and latch case support by door manufacturer.
- 3 Prepare for a #8-32 screw.
- 4 Prepare for a #12-24 screw.
- 5 Plaster guard by door manufacturer.



Frame Preparation

2 3/4" Backset Door Preparation

Title Installation Specifications for 83T Tubular Deadbolt Locks with Large Strike and Narrow Faceplate				<b>BEST ACCESS SYSTEMS</b>		
Series 83T	Backset 2 3/4"	Latch face width 1"	Door thickness 1 3/8"-3"	Rev date 09/2000	Template number <b>T09</b>	Rev -