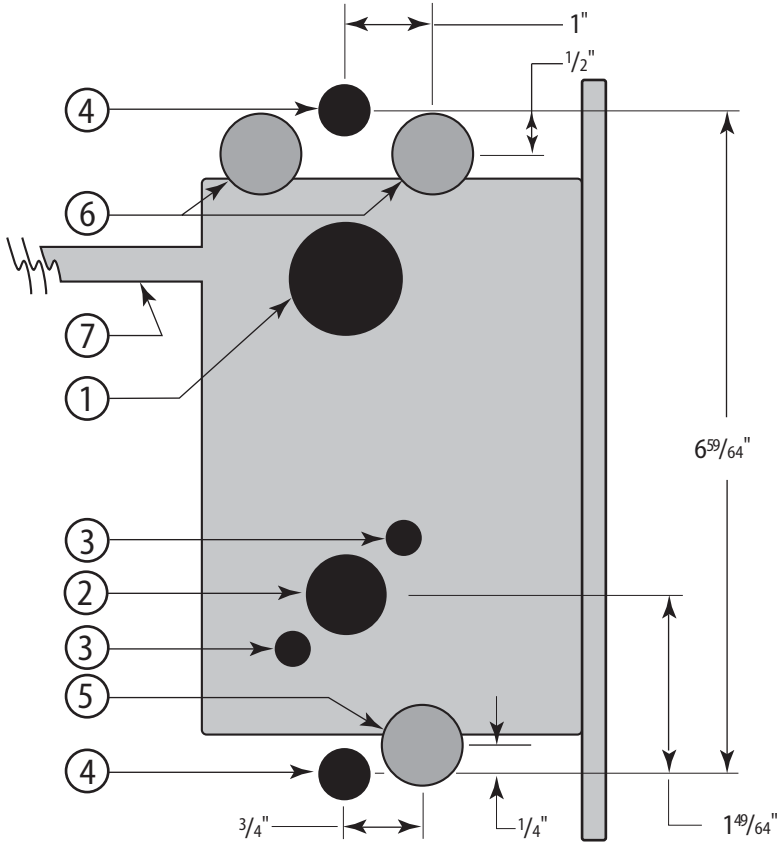




Lockset function	Inside holes						Outside holes					
	Knob 7/8" dia	Through-bolt 3/8" dia (2 holes)	Trim 5/8" dia (2 holes)	Sensor & solenoid wire 7/8" dia	Field harness & reader wire A 7/8" dia	Cylinder 1 1/4" dia	Knob 7/8" dia.	Through-bolt 3/8" dia (2 holes)	Trim 5/8" dia (2 holes)	Field harness & reader wire A 7/8" dia	Hole through door 3/8" dia	
EEL	■	■	■	■	■	■	■	■	■	■	■	
EEU	■	■	■	■	■	■	■	■	■	■	■	
NEL	■	■	■	■	■	■		■	■	■	■	
NEU	■	■	■	■	■	■		■	■	■	■	



**Note**

A Drill only one of the two holes. See the W15 Installation Template.