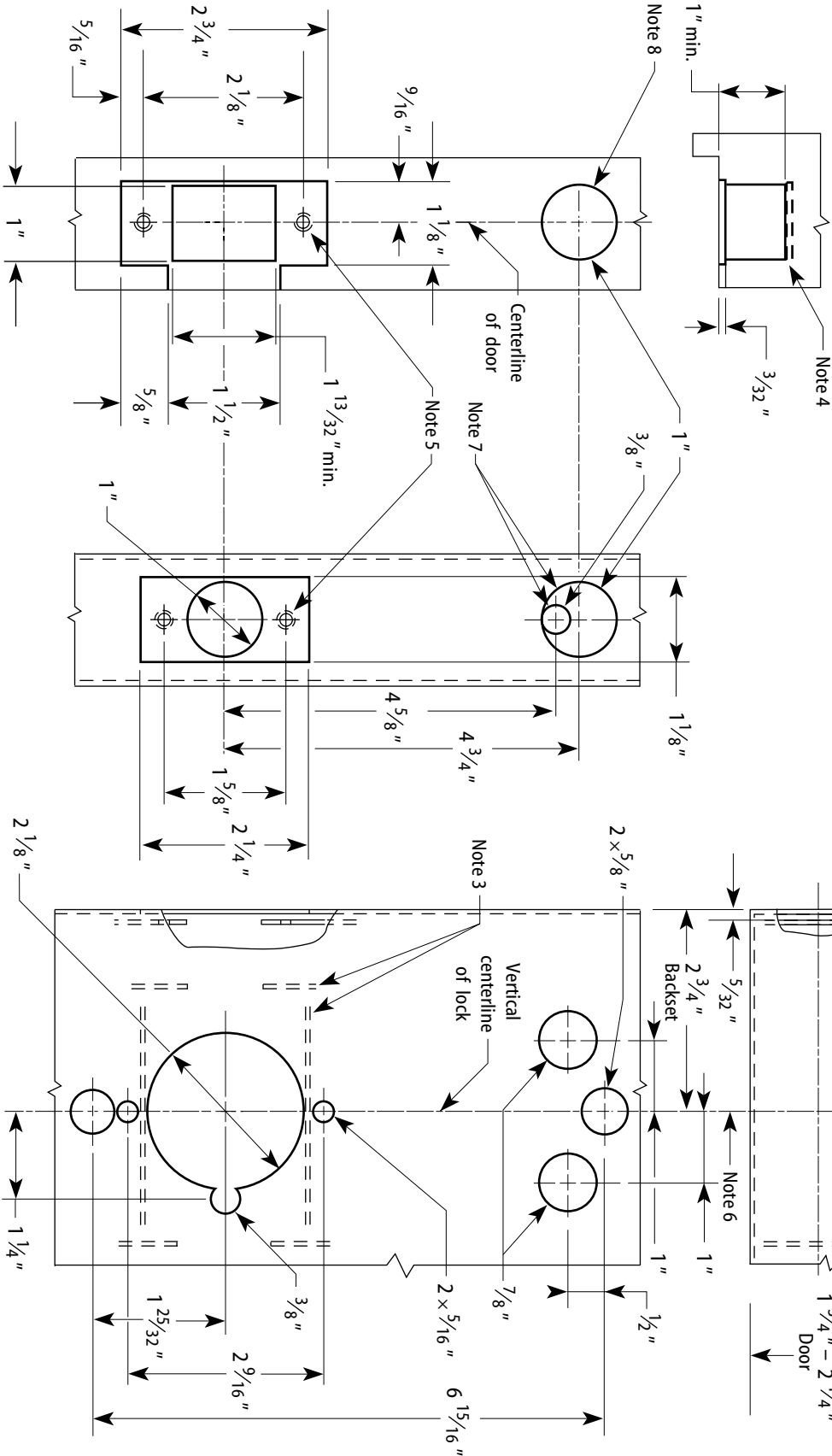


Notes

1. Also see the *W16 Template—Installation Template for 83KW/93KW Cylindrical Locks*.
2. Allow plus tolerance for clearance per ANSI A115.5. The general tolerance is $\pm 1/64"$.
3. The lock and latch case support are required from the door manufacturer.
4. The plaster guard is required from the frame manufacturer.
5. Prepare for a #8-32 screw.
6. For backsets other than $2\ 3/4"$, position the vertical centerline of the lock appropriately.
7. Drill the 1" hole $1\ 3/4"$ deep, drill the $3/8"$ hole through the door.
8. Drill the 1" hole 1" deep.

Strike box — overhead view



Frame preparation

2 3/4" Backset door preparation

Title Installation Specifications for 83KW/93KW-85KW/95KW IDH Max Cylindrical Locks with Small Strike				BEST ACCESS SYSTEMS	
Series 8KW/9KW	Backset 2 3/4", 3 3/4", 5"	Trim style MS, KP, PH, PM	Door thickness 1 3/4"-2 1/4"		
				Rev B	