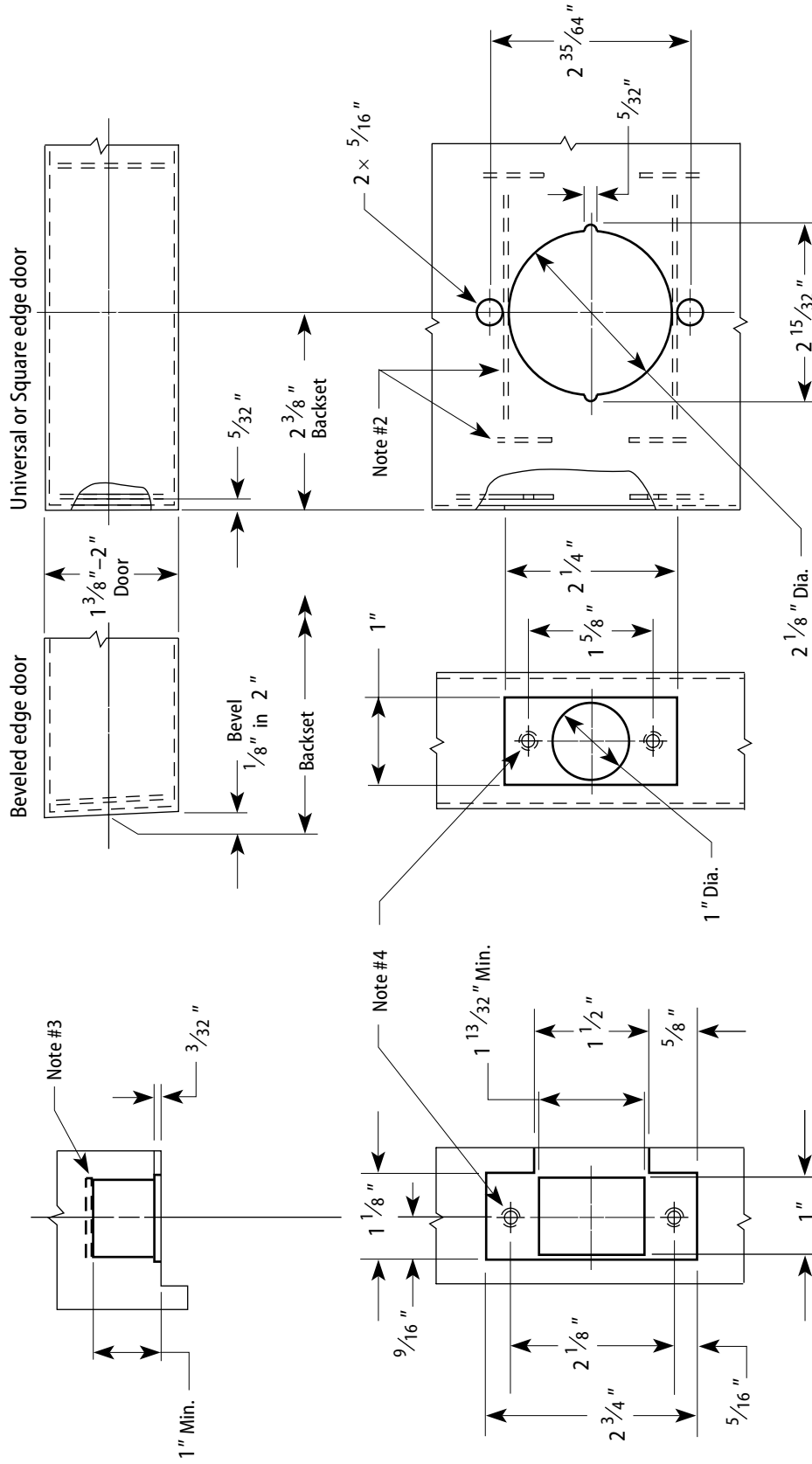


Notes

- 1 Allow plus tolerance for clearance per ANSI A115-2.
- 2 Lock and latch case support by door manufacturer.
- 3 Plaster guard by door manufacturer.
- 4 Prepare for a #8-32 screw.



Frame Preparation

2 3/8" Backset Door Preparation

Title Door & Frame Specification for 72KC Cylindrical Locks				BEST ACCESS SYSTEMS		
Series 72KC	Backset 2 3/8"	Strike Small ANSI strike (STK)	Door thickness 1 3/8 - 2"	Rev date 11/2002	Template number K22	Rev —