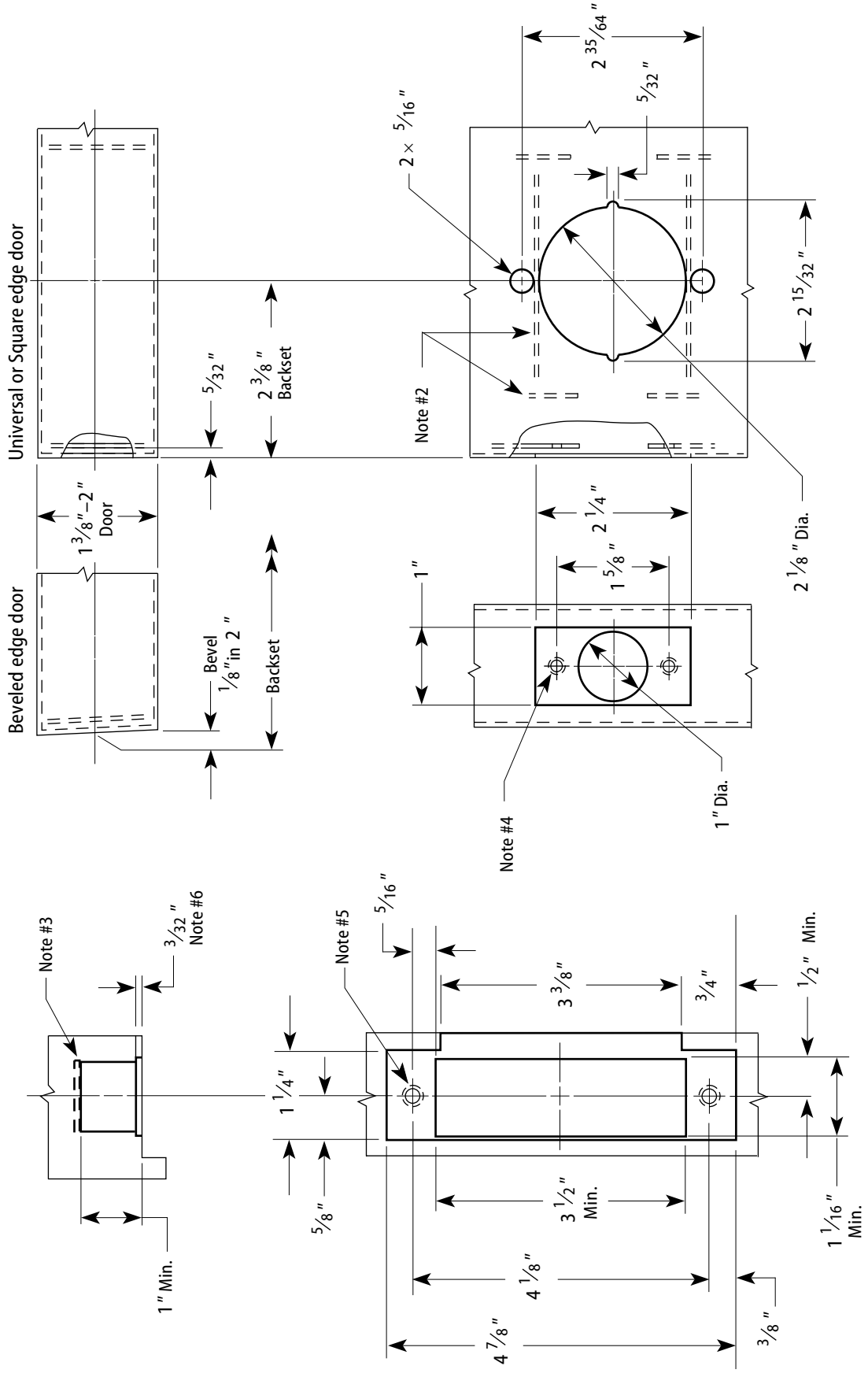


Notes

- 1 Allow plus tolerance for clearance per ANSI A115.2.
- 2 Lock and latch case support by door manufacturer.
- 3 Plaster guard by door manufacturer
- 4 Prepare for a #8-32 screw.
- 5 Prepare for a #12-24 screw.
- 6 When a strike box is used, 9/64".



Frame Preparation

2 3/8" Backset Door Preparation

| | | | | | | |
|--|-------------------|-------------------------------------|------------------------------|----------------------------|-------------------------------|----------|
| Title Door & Frame Specification for 72KC Cylindrical Locks | | | | BEST ACCESS SYSTEMS | | |
| Series 72KC | Backset 2 3/8" | Strike Large ANSI strike (S3) | Door thickness 1 3/8 - 2" | Rev date 11/2002 | Template number K23 | Rev - |