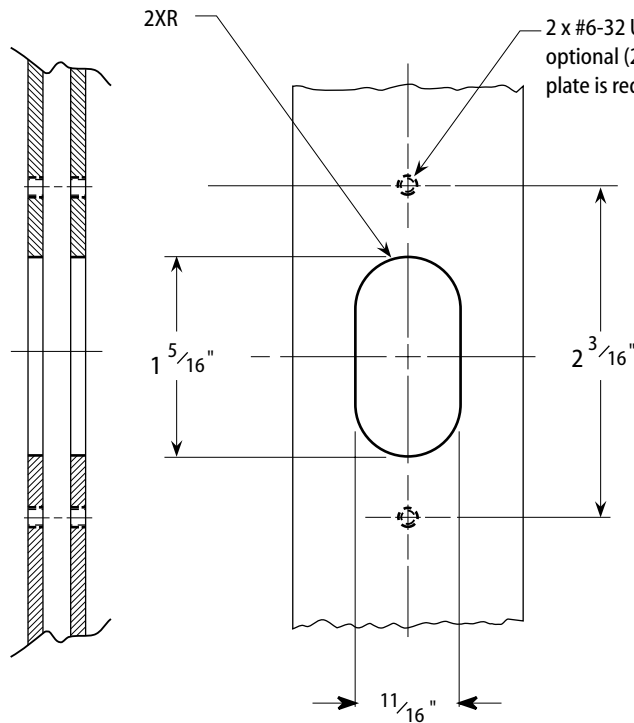
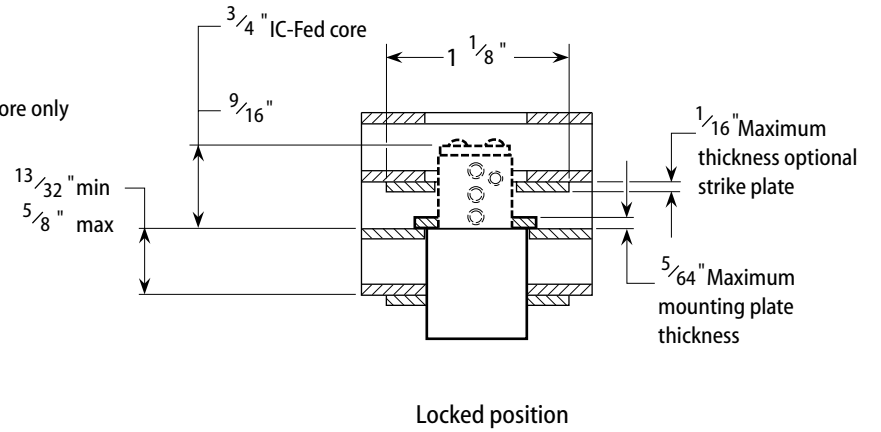
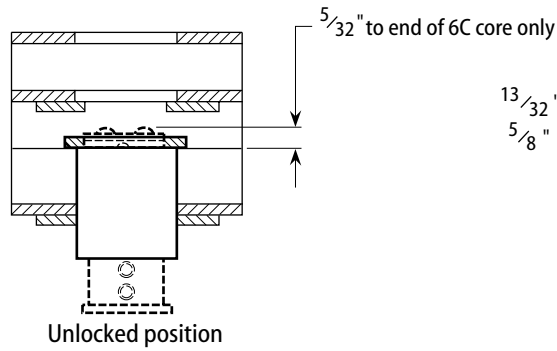


Title		Installation Specifications for 4S74 Sliding Door Lock	
Series	4S	Bracket	—
Trim style	—	Door thickness	13/32" - 5/8"
Rev date	04/2000	Template number	S13
Rev		A	
BEST ACCESS SYSTEMS			

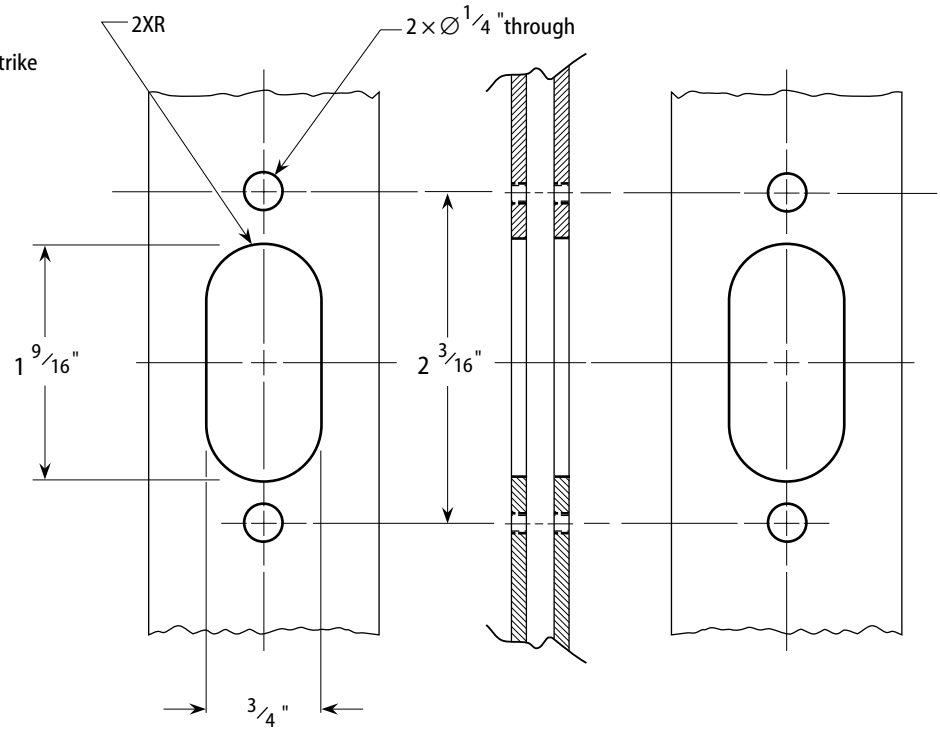
Metal Door

Notes

- 1 Allow plus 1/32" tolerance for clearance.
- 2 Locate the lock at the top or bottom of sliding doors.



Back panel



Front panel

Wood Door

Notes

- 1 Allow plus 1/32" tolerance for clearance.
- 2 Locate the lock at the top or bottom of sliding doors.

