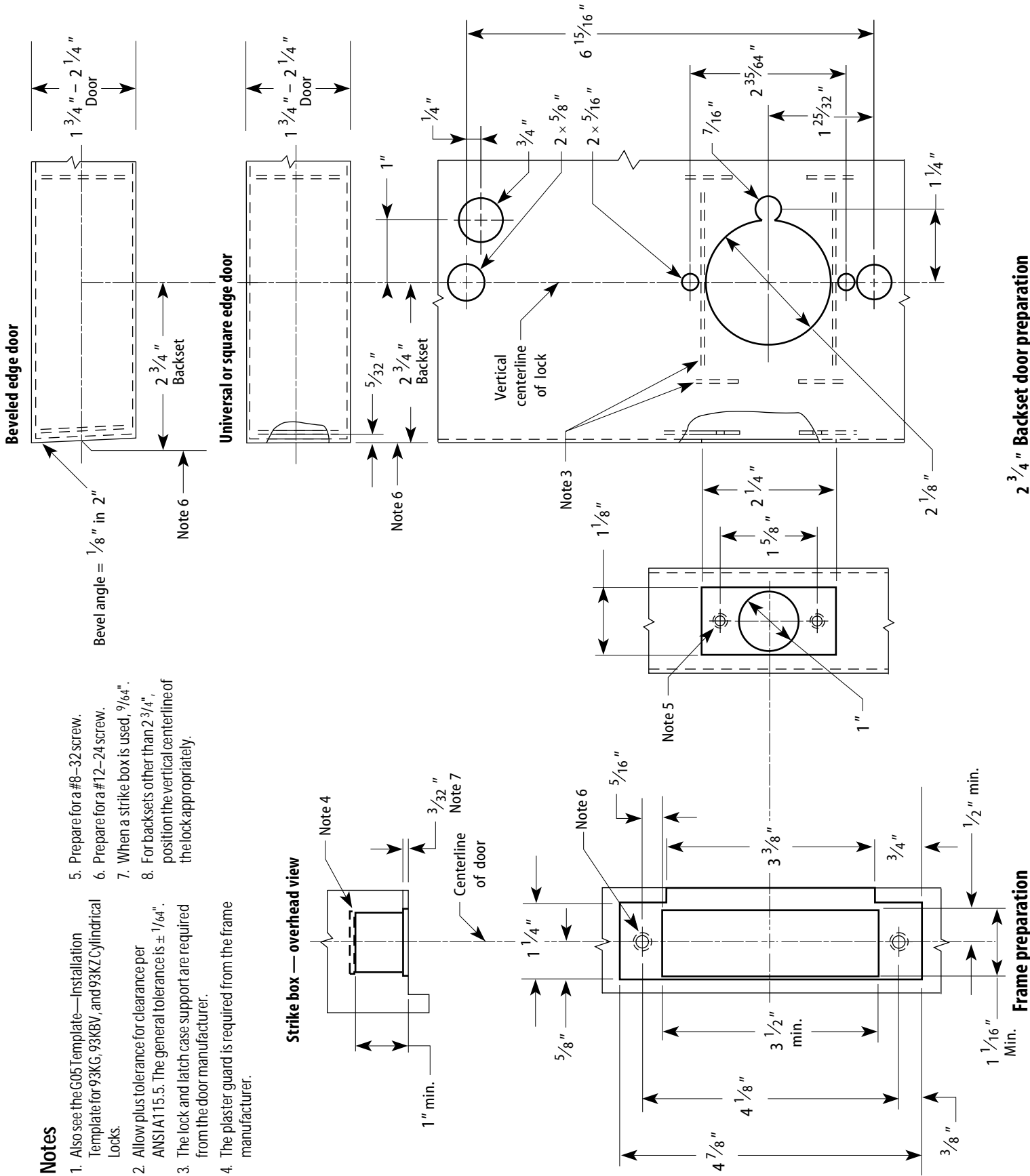


**Notes**

1. Also see the G05 Template—Installation Template for 93KG, 93KBV, and 93KZ Cylindrical Locks.
2. Allow plus tolerance for clearance per ANSI A115.5. The general tolerance is  $\pm 1/64"$ .
3. The lock and latch case support are required from the door manufacturer.
4. The plaster guard is required from the frame manufacturer.
5. Prepare for a #8-32 screw.
6. Prepare for a #12-24 screw.
7. When a strike box is used,  $9/64"$ .
8. For backsets other than  $2\ 3/4"$ , position the vertical centerline of the lock appropriately.



**2 3/4" Backset door preparation**

**Frame preparation**

Title Installation Specifications for 93KG, 93KBV, and 93KZ Cylindrical Locks with Large Strike				<b>BEST ACCESS SYSTEMS</b>		
Series 93KG, 93KBV, 93KZ	Backset 2 3/4"	Strike Large ANSI strike (S3)	Door thickness 1 3/4" to 2 1/4"	Rev date 3/2002	Template number <b>G02</b>	Rev <b>C</b>