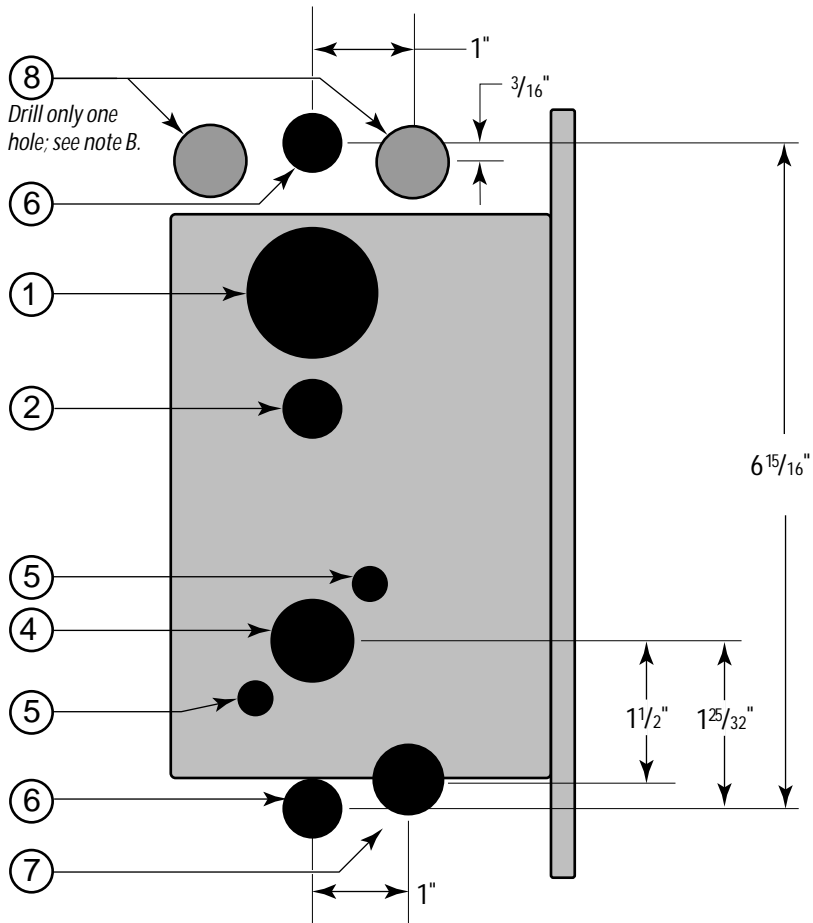


Lock function	Inside holes								Outside holes				
	② Turn knob 5/8" dia.	④ Lever 7/8" dia.	⑤ Through-bolt 3/8" dia. (2 holes)	⑥ Inside trim A 5/8" dia. (2 holes)	⑦ Sensor & motor wire 7/8" dia.	⑧ Harness B 7/8" dia.	⑧ Cylinder 1 3/8" dia.	① Lever 7/8" dia.	④ Through-bolt 3/8" dia. (2 holes)	⑤ Outside trim 5/8" dia. (2 holes)	⑥ Harness B 7/8" dia.		
EV		■	■	■	■	■	■	■	■	■	■		
FV	■	■	■	■	■	■	■	■	■	■	■		
LV	■	■	■	■	■	■		■	■	■	■		
NV		■	■	■	■	■		■	■	■	■		



**Notes**

- A. The general tolerance is  $\pm 1/64$ ".
- B. Drill only one of the two holes. See the G06 Template—Installation Template for 35HG, 35HBV, and 35HZ Mortise Locks.

Title Hole Pattern Chart for 35HG, 35HBV, and 35HZ Mortise Locks				<b>BEST ACCESS SYSTEMS</b>			
Series 35HG, 35HBV, 35HZ	Backset 2 3/4"	Trim style DV, MS PH, PM, SC, KP	Door thickness 1 3/4"-3"	Rev date 3/2003	Template number <b>G04</b>	Rev <b>E</b>	