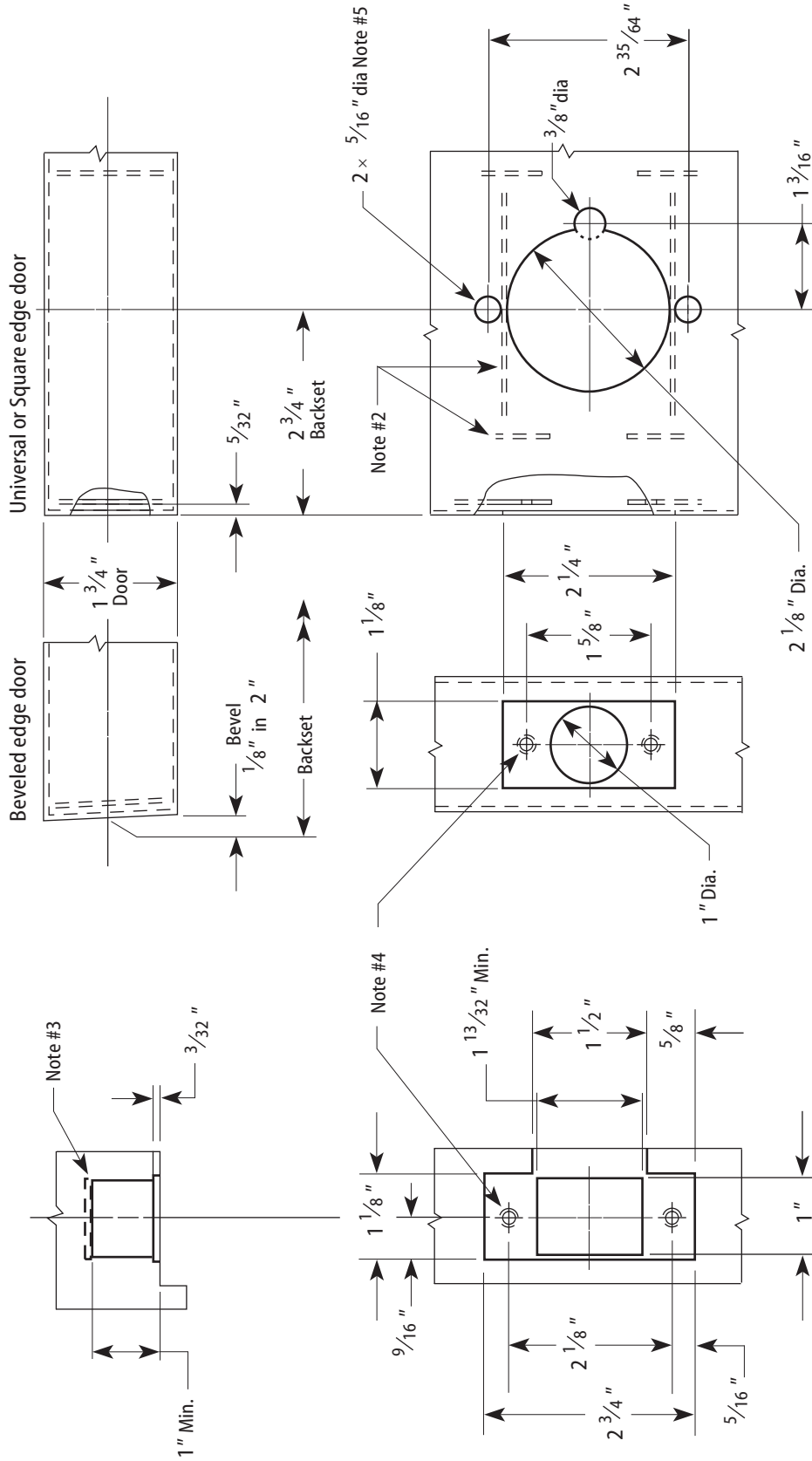


Notes

- 1 Allow plus tolerance for clearance per ANSI A115-2.
- 2 Lock and latch case support by door manufacturer.
- 3 Plaster guard by door manufacturer.
- 4 Prepare for a #8-32 screw.
- 5 For 93KW only! The 83KW "C" style roses will **not** cover these holes.
- 6 For 93KW locks, use the KD303 drill jig to ensure that through-bolts and levers are properly aligned.



2 3/4" Backset Door Preparation

Frame Preparation

| | | | | | | |
|---|-------------------|-----------------------|--------------------------------------|---------------------------------|---------------------|-------------------------------|
| Title Installation Specifications for 83KW & 93KW Electrified Cylindrical Locks | | | | BEST ACCESS SYSTEMS | | |
| Series 83KW, 93KW | Backset 2 3/4" | Functions DEU, DEL | Strike Small ANSI strike (STK) | Door thickness 1 3/4"-2 1/4" | Rev date 06/2003 | Template number W20 |
| | | | | | | Rev A |