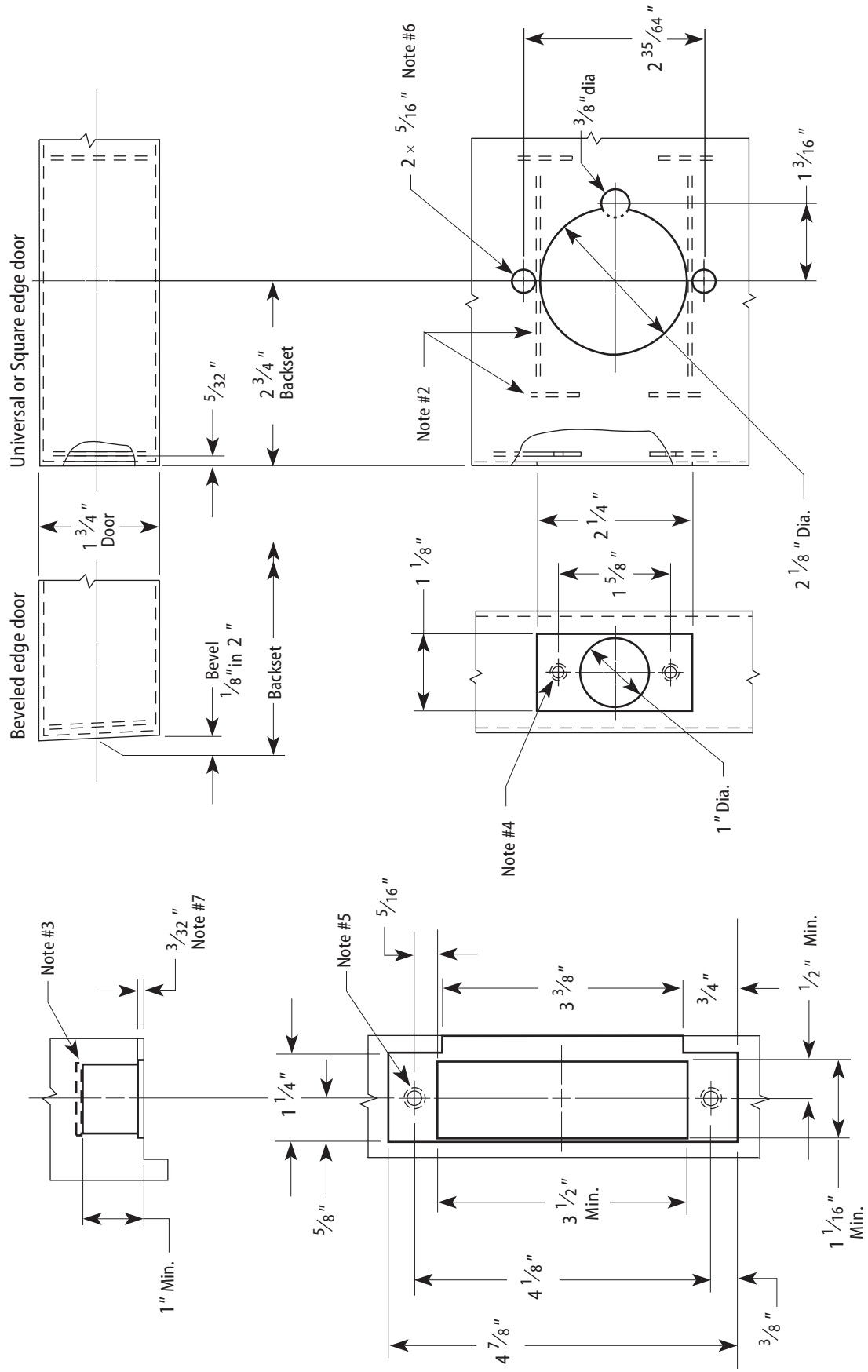


Notes

- 1 Allow plus tolerance for clearance per ANSI A115.2.
- 2 Lock and latch case support by door manufacturer.
- 3 Plaster guard by door manufacturer
- 4 Prepare for a #8-32 screw.
- 5 Prepare for a #12-24 screw.
- 6 For 93KW only! The 83KW "C" style trim will **not** cover these holes.
- 7 When a strike box is used, 9/64".
- 8 For 93KW locks, use the KD303 drill jig to ensure that through-bolts and levers are properly aligned.
- 9 For all electrified products that require concealed wiring, a 3/8" diameter raceway through the door is required.



Frame Preparation

2 3/4" Backset Door Preparation

Title Installation Specifications for 83KW & 93KW Electrified Cylindrical Locks				BEST ACCESS SYSTEMS			
Series 83KW, 93KW	Backset 2 3/4"	Functions DEU, DEL	Strike Large ANSI strike (S3)	Door thickness 1 3/4"-2 1/4"	Rev date 06/2003	Template number W21	Rev A